



Project Data for Dial Application

Note: This information is necessary to properly size and quote each application. In addition, Destaco France requires approval of application sizing in order to validate the product warranty.

Date: _____ / Customer: _____ / Contact: _____

Phone: _____ / Fax: _____ / Address: _____

Number of Stations: S= _____

Dwell (stopped) Time: t_1 = _____ seconds

Index (movement) Time: t_2 = _____ seconds

Index Movement Type: Continuous Running _____ / Cycle-on-Demand _____

Dial Plate Diameter: D= _____ mm

Dial Plate Thickness: L= _____ mm

Dial Plate Material: Steel _____ / Aluminum _____ / Other (specify) _____

Dial Plate Weight: Wd= _____ kg.

Product & Fixture Weight (each station): Wp= _____ kg.

Work Radius (center of dial to center of station): R= _____ mm

Additional force and/or torque: _____

Global environment: _____

Motoreducer: Yes / No Particular specifications: _____

Sensing option: Yes / No Particular specifications: _____

Center post option: Yes / No Particular specifications: _____

Dowel holes finished: Yes / No Particular specifications: _____

Mounting position (see below: Installation):

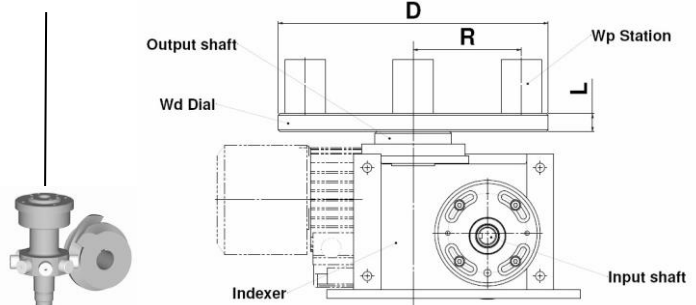
Additional Information Pertinent to this Application: _____

To rebuilt an indexer, please, indicate the serial number of the previous one: SN _____
 (You will find the serial number on the identification plate of the indexer. If possible, send pictures of the application)

Destaco Representative:



8200 Veszprém, Házgyári út 7.
www.iptker.hu



Installation: _____ (in average A-1-RH or C-1-LH)

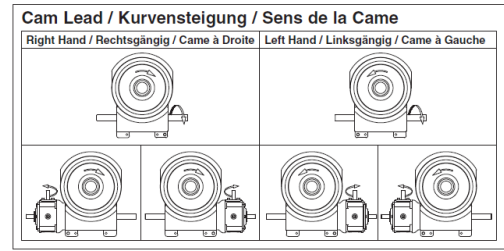
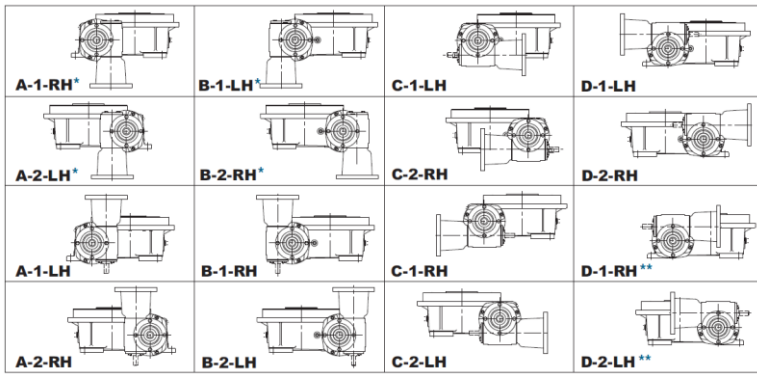
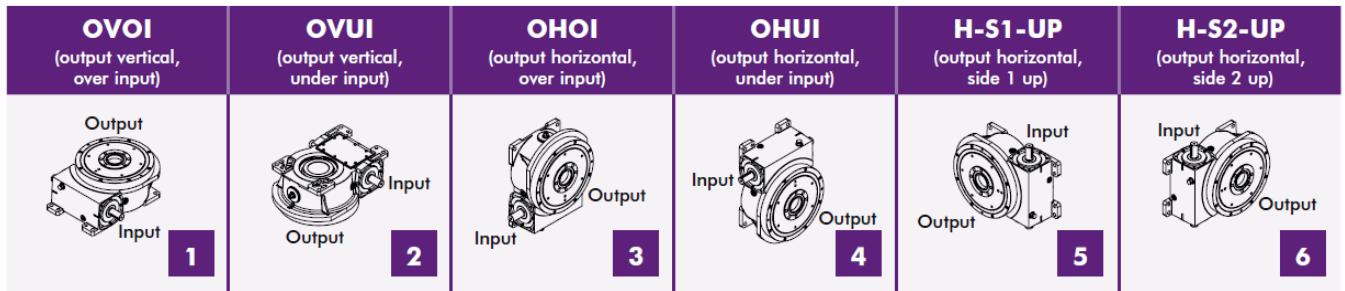
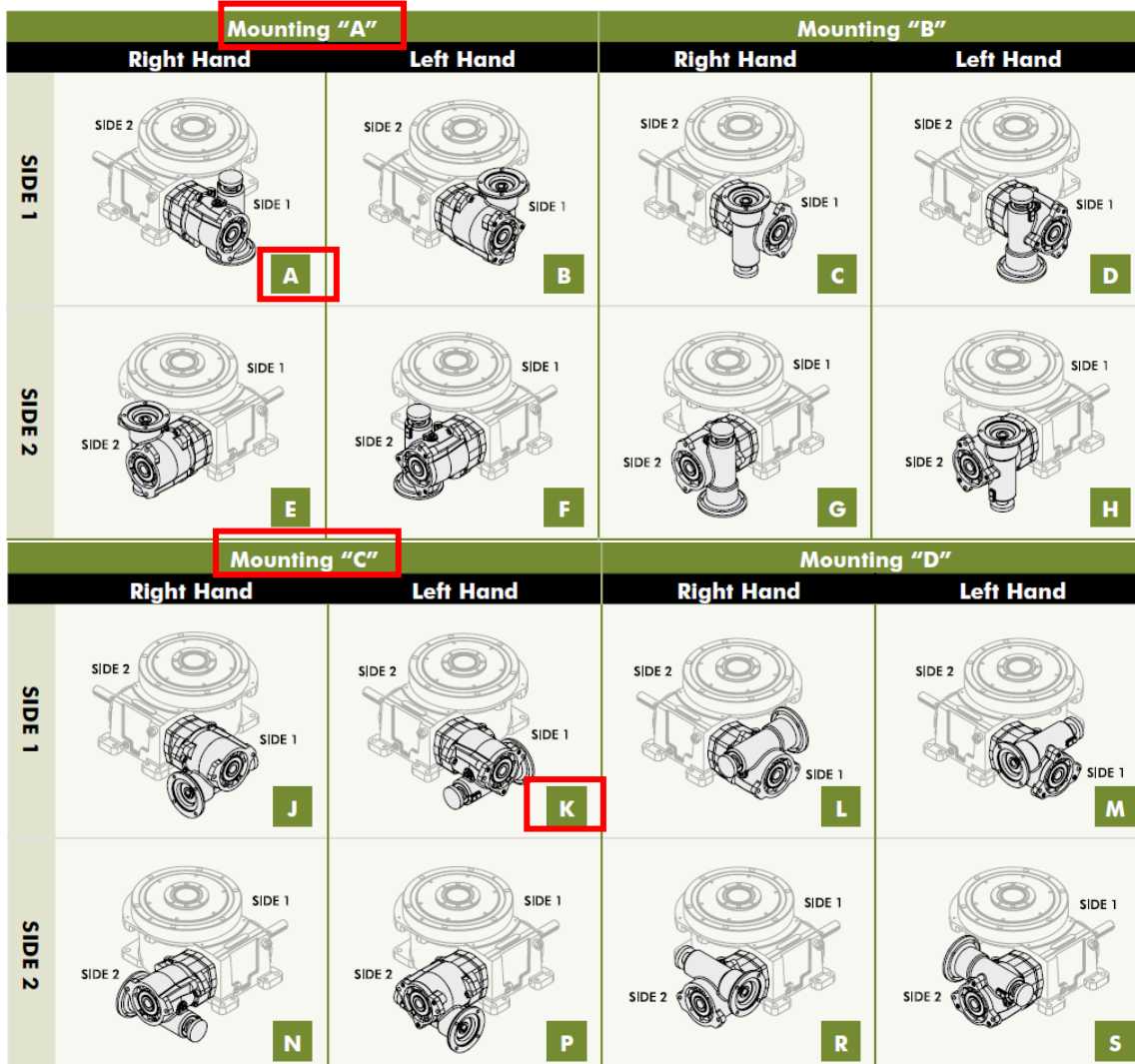


Table position RDM: _____ (In average 1)

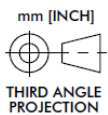
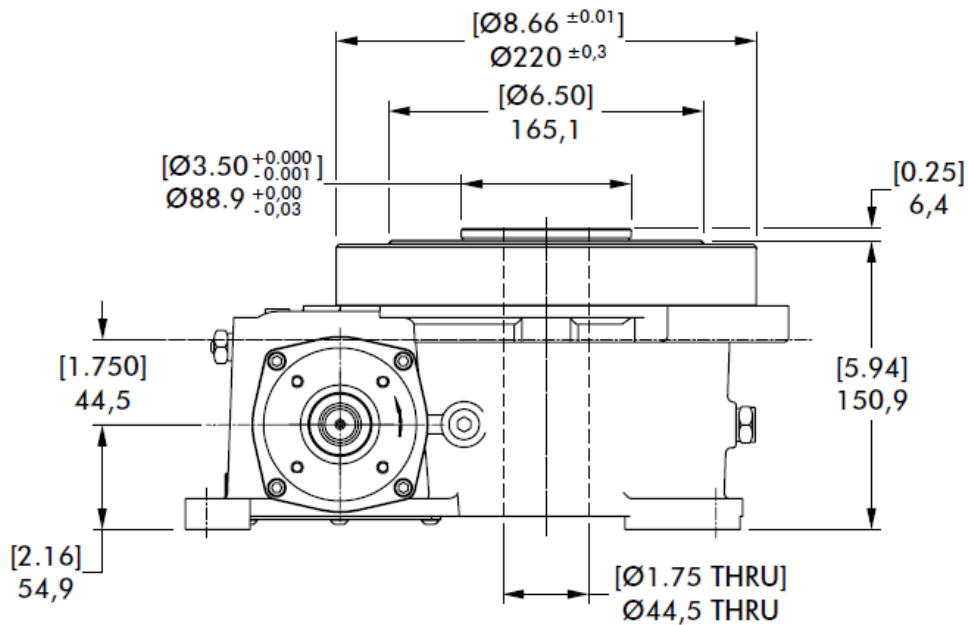
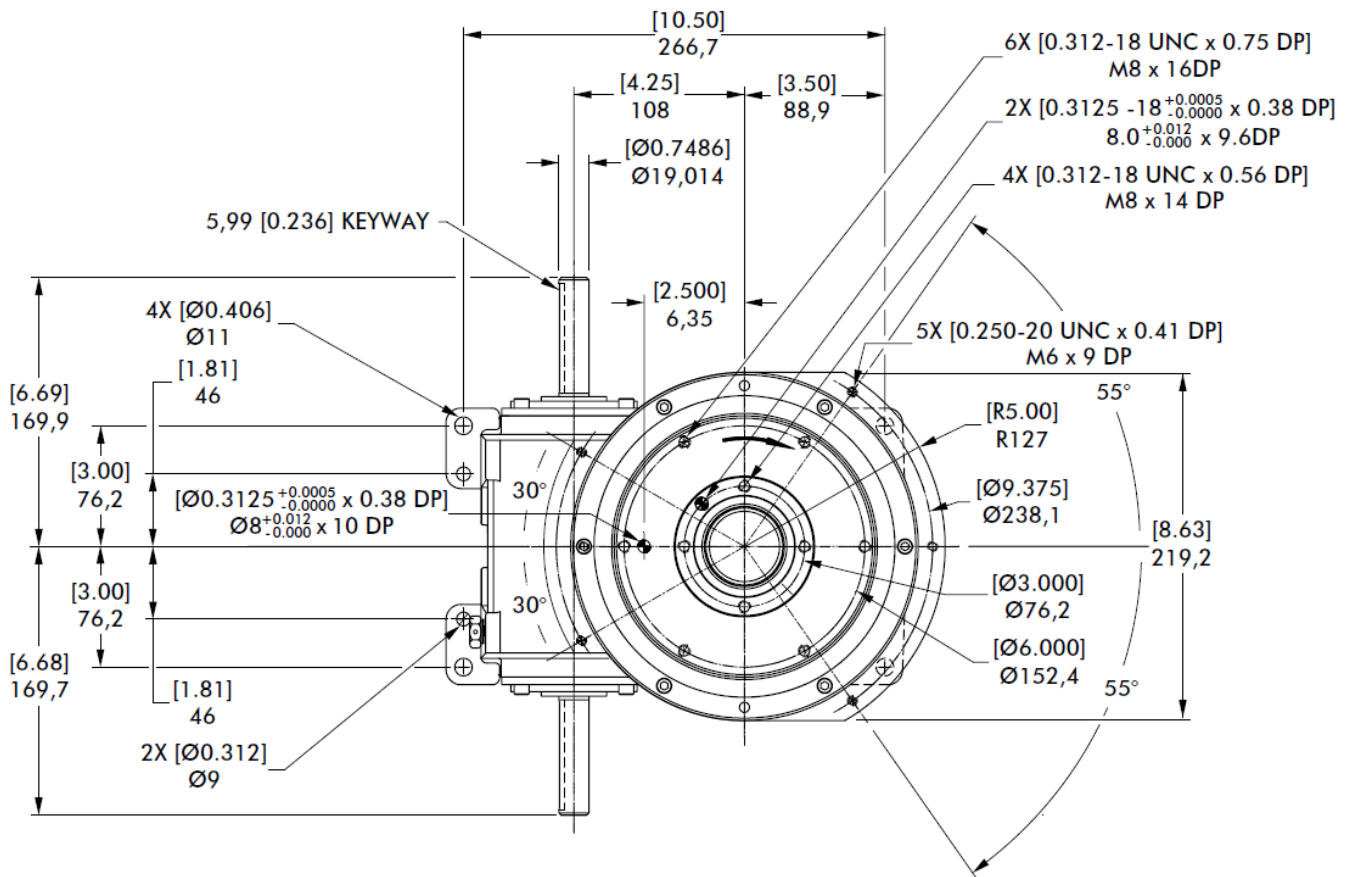


Drive position RDM: _____ (In average AA or CK)

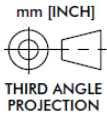


601RDM SERIES

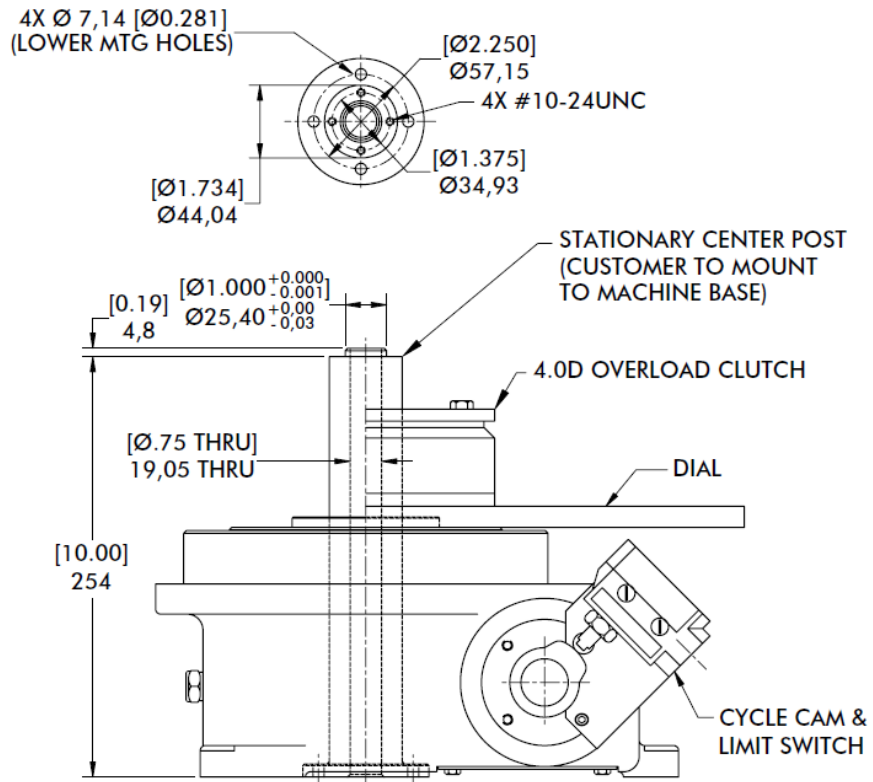
Rotary Index Drive | Dimensions



601RDM SERIES



Center Post



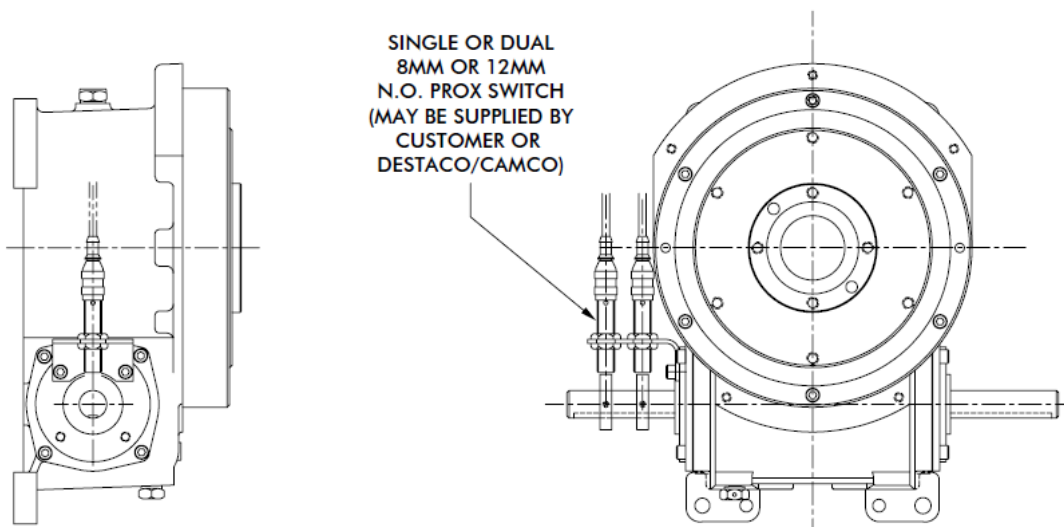
The stationary center post represented in the CAD is the standard length version:

- 254 mm from base to mtg flange.

See under the other standard length:

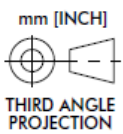
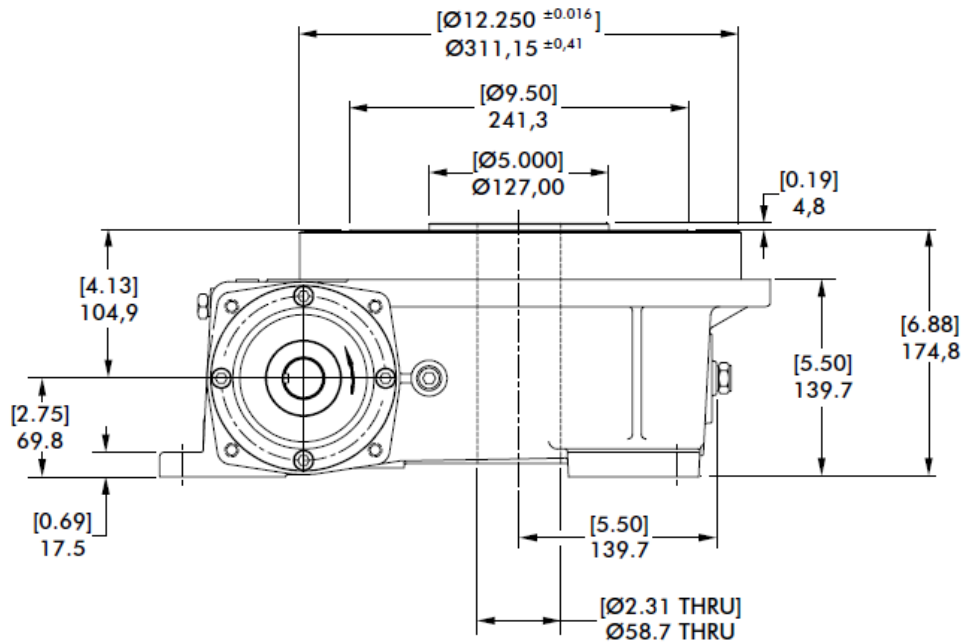
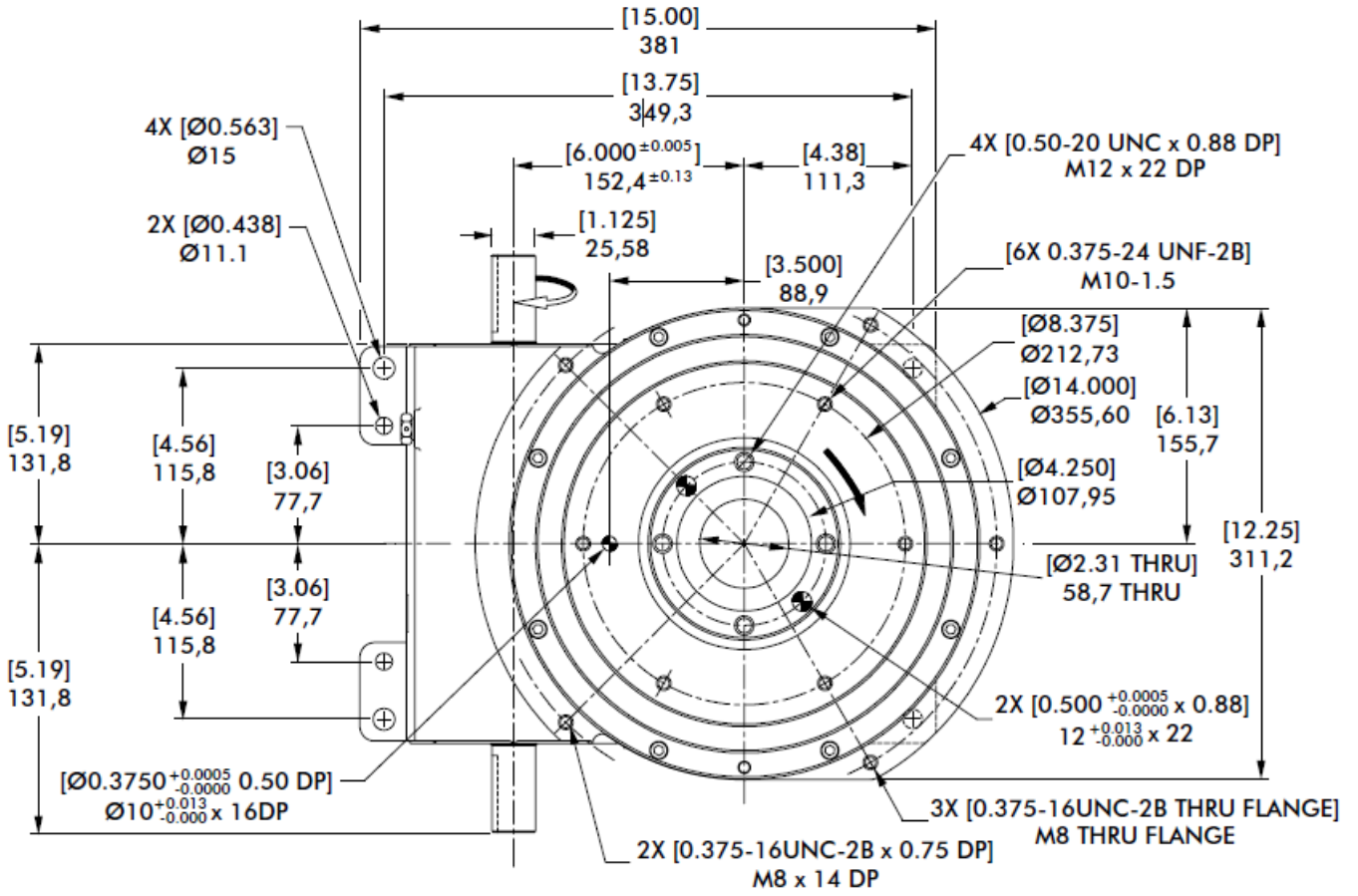
- 175 mm;
- 231.9 mm;
- 328 mm;
- 173 mm
- and customize per customer request.

Proximity Switch



902RDM SERIES

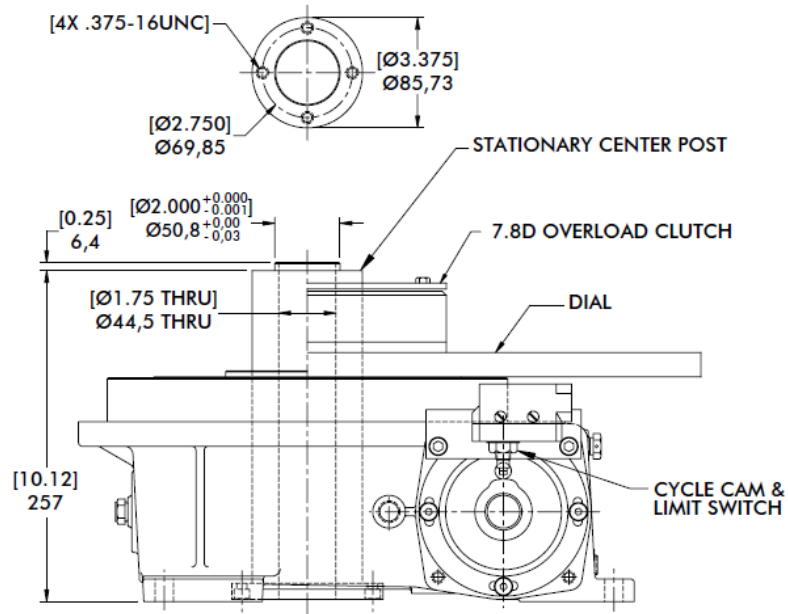
Rotary Index Drive | Dimensions



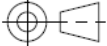
902RDM SERIES

Rotary Index Drive | Product Overview | Technical Specifications

Center Post

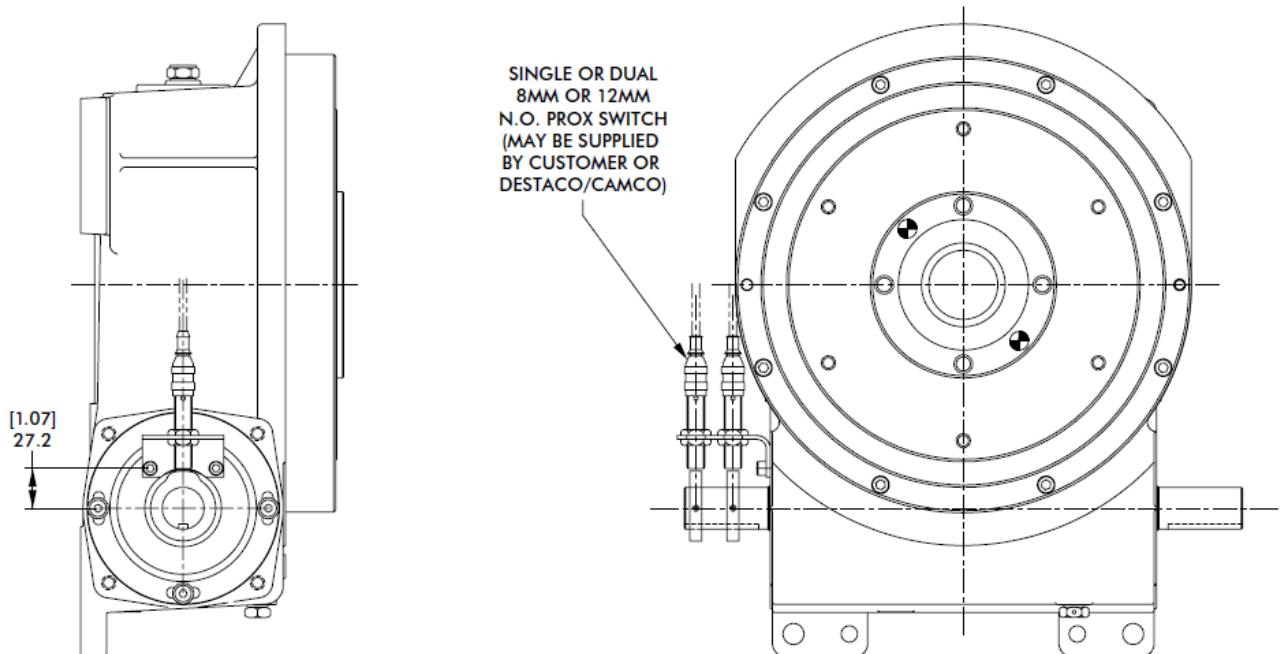


mm [INCH]



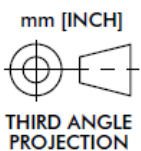
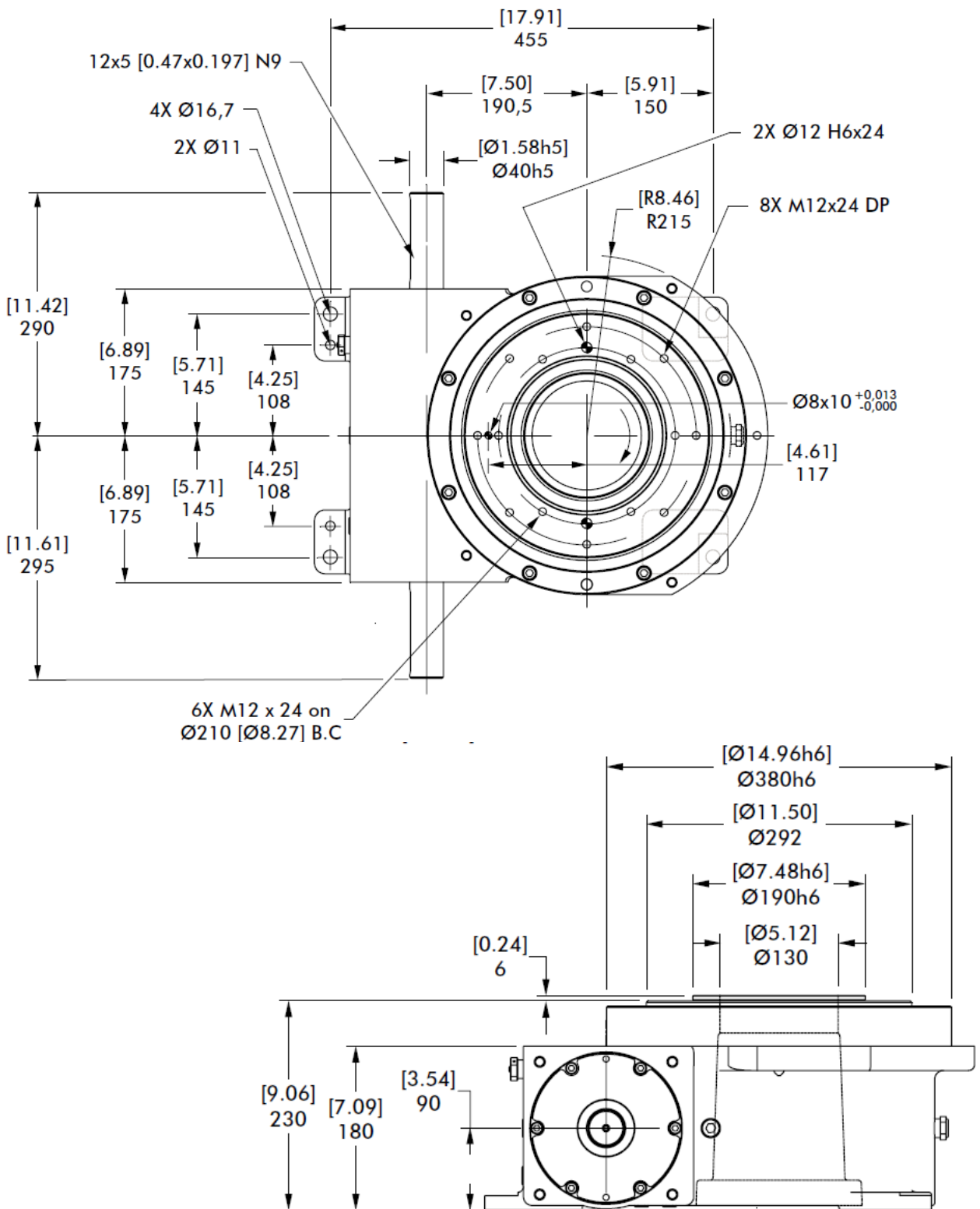
THIRD ANGLE PROJECTION

Proximity Switch



110ORDM SERIES

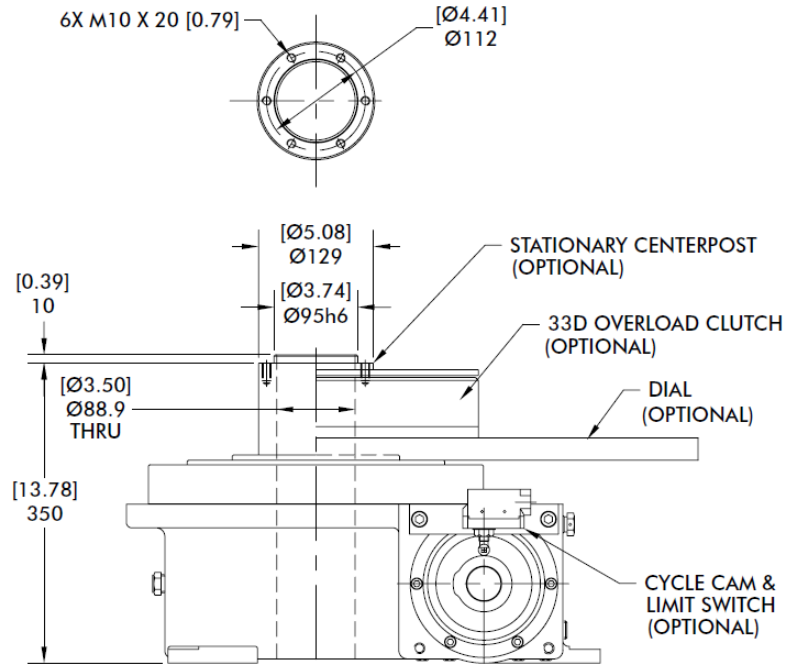
Rotary Index Drive | Dimensions



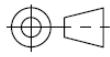
1100RDM SERIES

Rotary Index Drive | Product Overview | Technical Specifications

Center Post

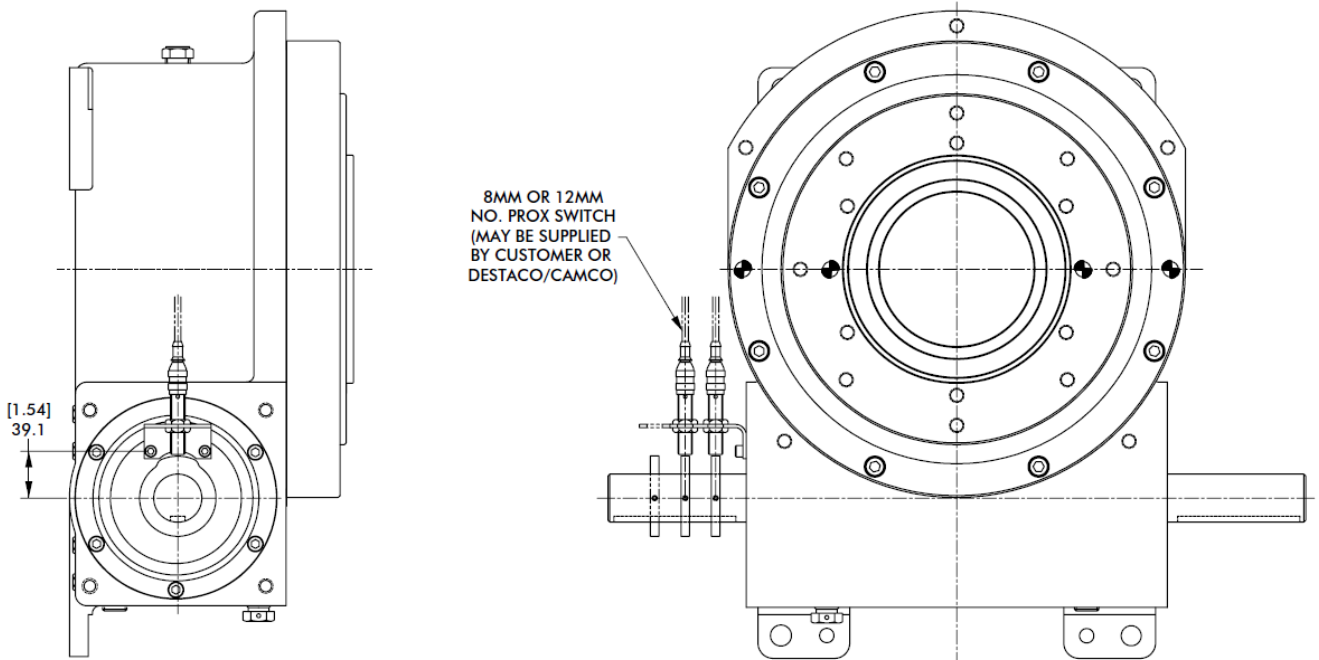


mm [INCH]



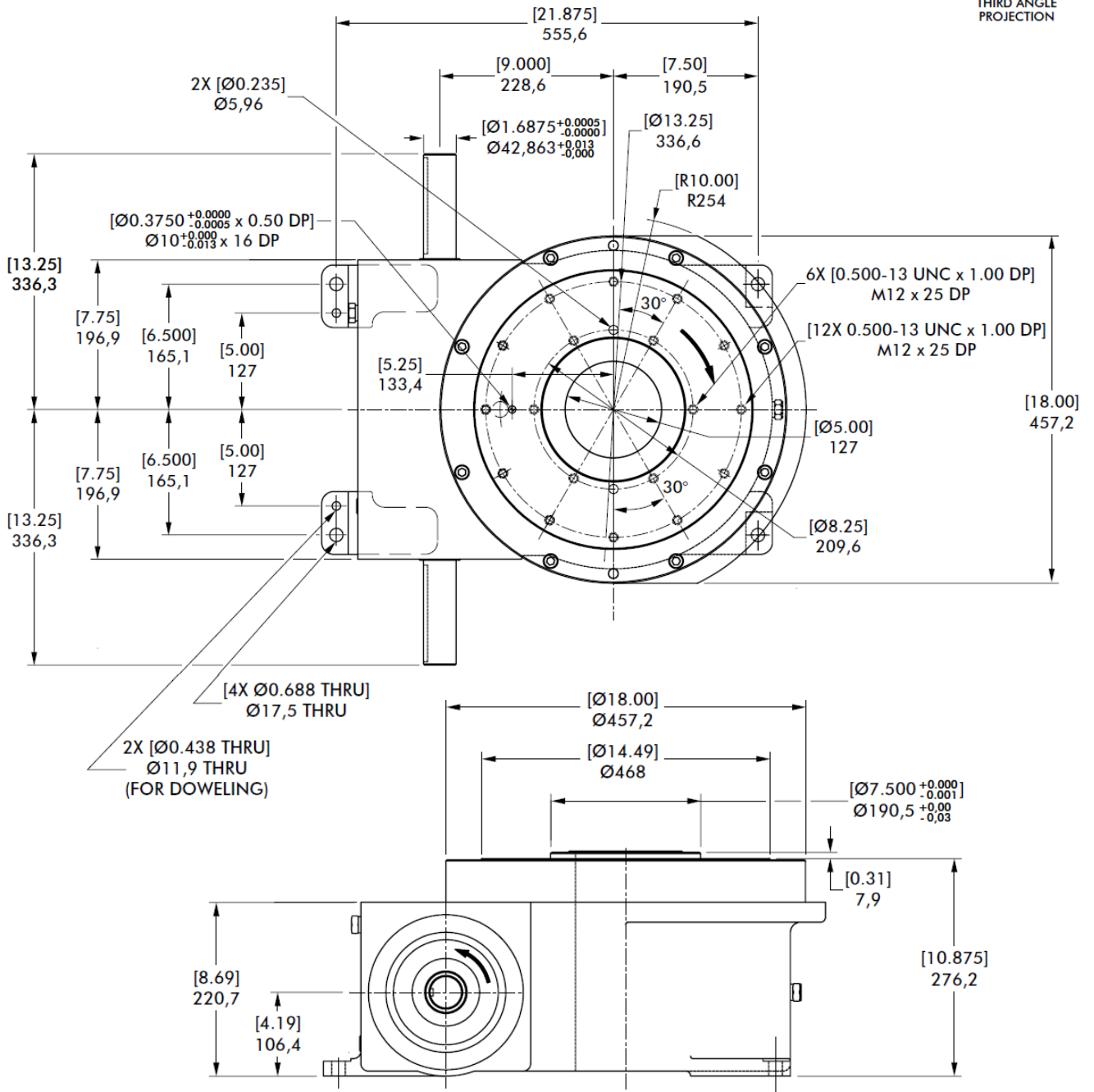
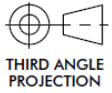
THIRD ANGLE PROJECTION

Proximity Switch



1305RDM SERIES

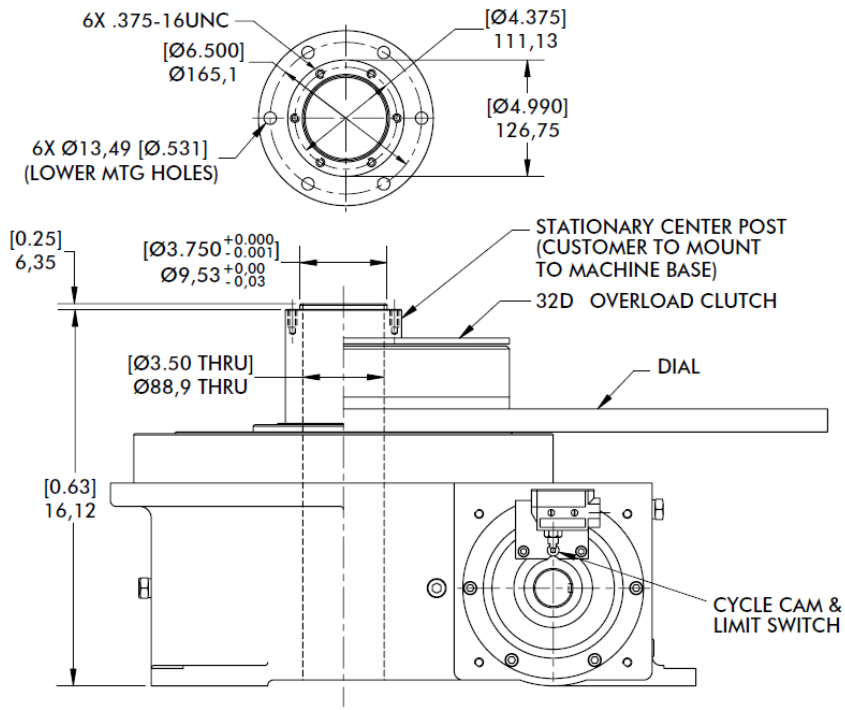
Rotary Index Drive | Dimensions




1305RDM SERIES

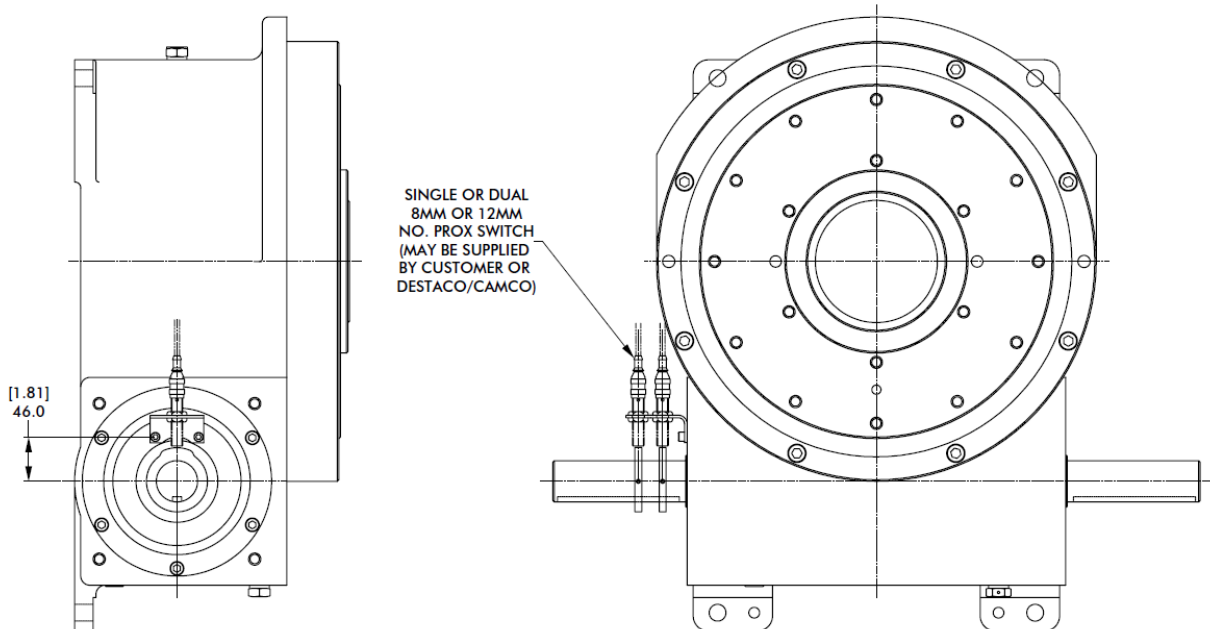
Rotary Index Drive | Product Overview | Technical Specifications

Center Post



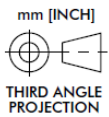
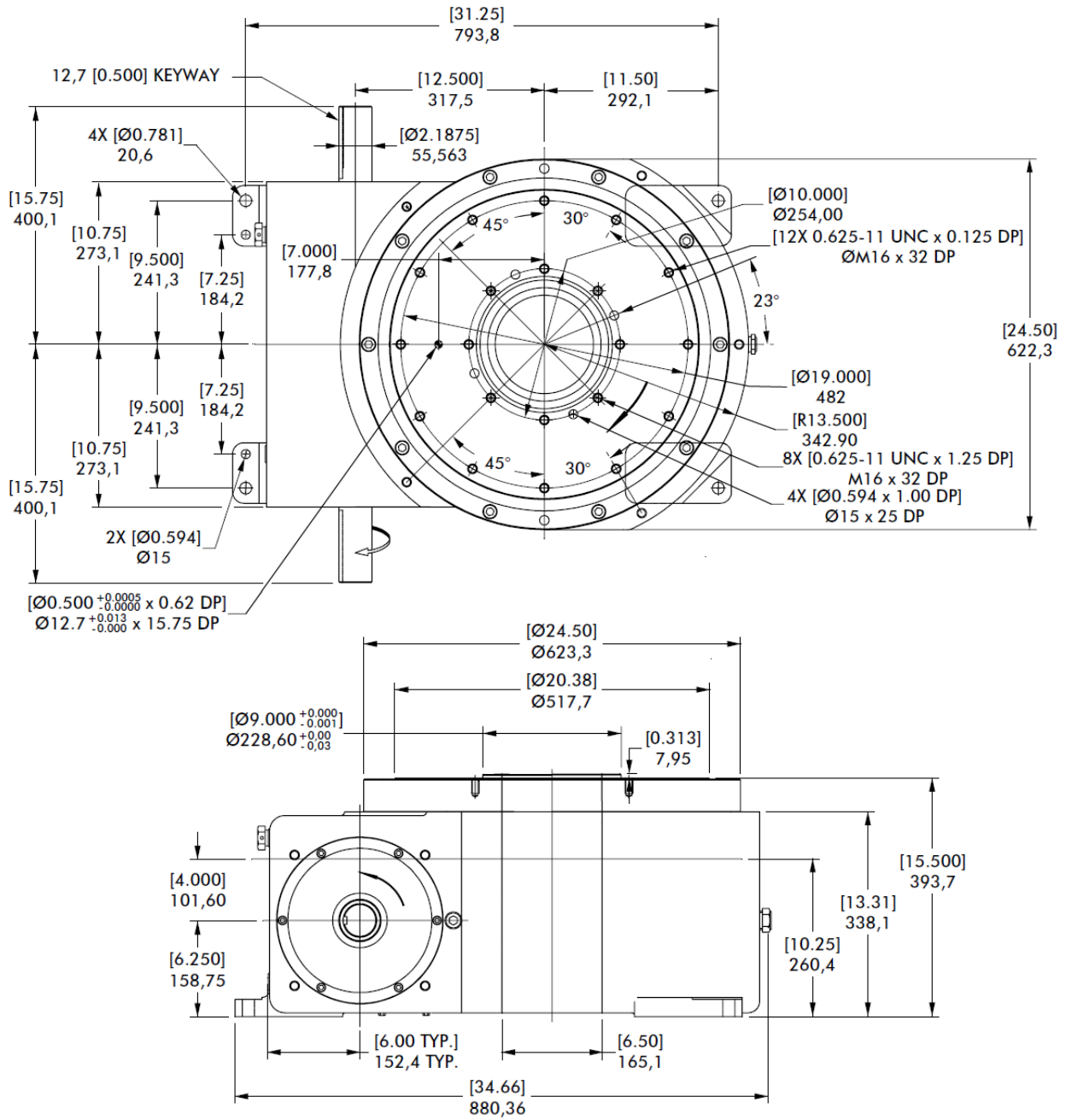
mm [INCH]

 THIRD ANGLE
 PROJECTION

Proximity Switch



1800RDM SERIES

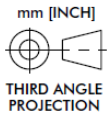
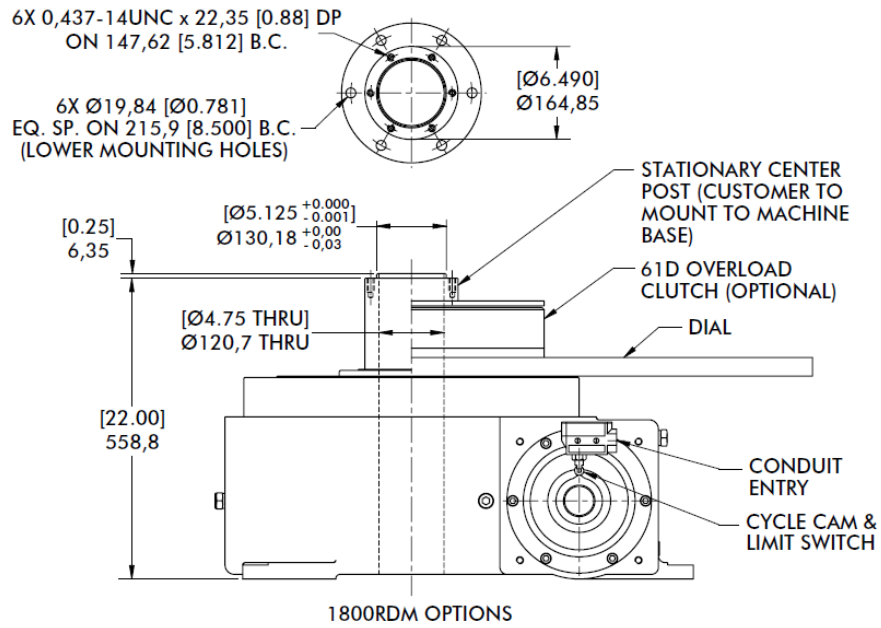
Rotary Index Drive | Dimensions



1800RDM SERIES

Rotary Index Drive | Product Overview | Technical Specifications

Center Post



Proximity Switch

